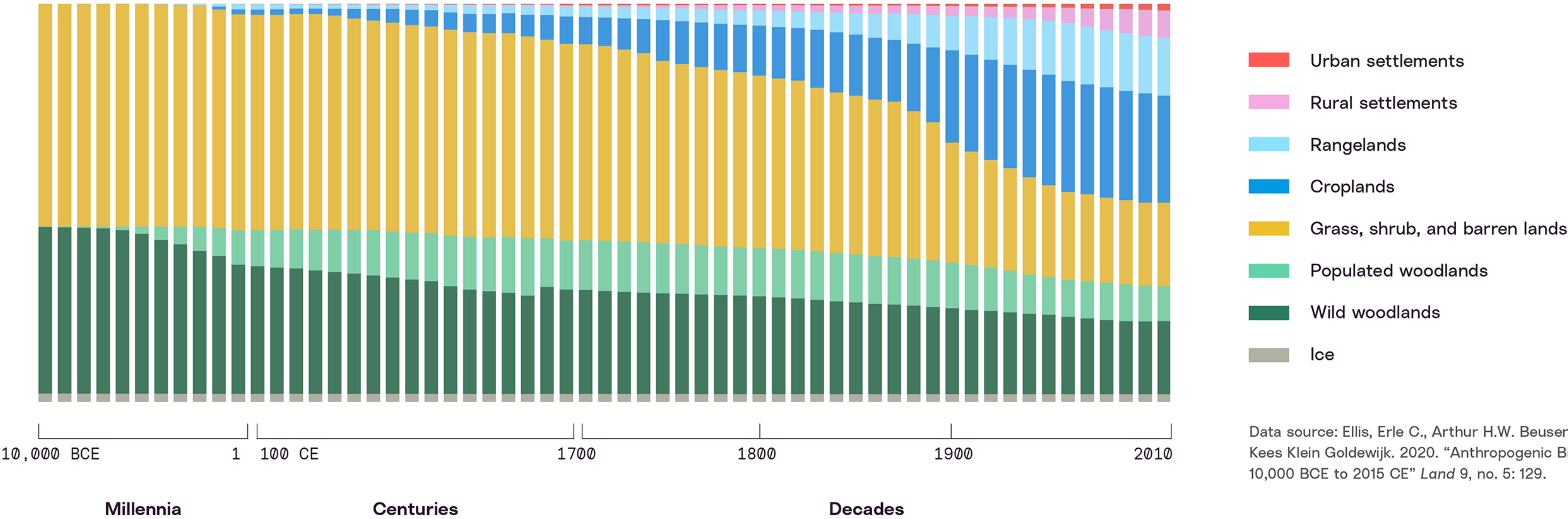


# Global land use since 10,000 BCE



Data source: Ellis, Erle C., Arthur H.W. Beusen, and Kees Klein Goldewijk. 2020. "Anthropogenic Biomes: 10,000 BCE to 2015 CE" *Land* 9, no. 5: 129.

Around the dawn of civilization, Earth’s land surface consisted entirely of seminatural and wild lands. Since that time, humans have appropriated more and more land, especially after the late 1800s ushered in an era of industrialization and widespread fossil fuel use. By the 21st century, humans had altered the vast majority of non-desert, non-frozen land area.